

NEWPORT HISTORICAL SOCIETY

MILL TOWN MESSENGER

THIS NEWSLETTER IS GENEROUSLY FUNDED BY SUGAR RIVER PHARMACY

Volume 10, Issue 1

January, 2016

From the President's Pen



by Cathryn
Baird

"Always laugh when you can. It's cheap medicine."

Lord Byron 1788-1824

Few would disagree over the value of laughter as a cheap antidote for what ails you, but the jury remains in deliberation about the high costs and value of some medicine.

The quaint apothecary shop, dispensary and corner drug store, are icons of the past. No longer do mortar and pestle signs hang outside a storefront to alert potential customers that pharmacological products are "manufactured" on the premises. The little drug store with personal service has been eclipsed by pharmacy chains in big box stores and now pharmacy companies are Big Business. The never-ending ads on TV not only tell you what drugs you need to take but they tell you to tell your doctor!

I recall the humorist Walter Matthau saying that he always wanted to be like the local pharmacist because "... he was always dressed in a nice white coat; he looked very calm, you'd give him money and he'd give you something you wanted to buy." We are fortunate that Newport is home to three pharmacies with both male and female pharmacists, who offer personalized, compassionate service and a willingness to help customers when they have a "bitter pill to swallow." We may not be able to change the corporate structure of health care but we can change our attitudes. So...laugh more. It's good for your health. You can't be angry and laugh at the same time! Best wishes for good health and more laughter in 2016.

Meeting & Program Times

All members and the public are invited to all meetings and programs.

BUSINESS MEETINGS:

Held at the museum, 6:30-8 PM

Mon. January 11

Mon. February 8

Mon. March 14

Mon. April 11

PROGRAMS:

No programs January, February, or March.

Winter Carnival History

See the insert in this newsletter for brief excerpts from "The First 80 Years of Winter Carnivals", in the 1996 Newport Town Report, by Sharon Christie. The entire article will be available in booklet form, from the Newport Historical Society during and after Carnival.

Ephemera Donation an Example of Helping Museum Grow

By Ann St. Martin Stout

As a docent at the Newport Historical Society museum -- the Nettleton House -- I am privileged to periodically spend several hours welcoming visitors to the museum, accepting artifacts on behalf of the society, and in general poking around in the books and displays to see what I can learn.

On a Sunday in December, I was behind the desk when Bernice "Bunny" Perry brought in some wonderful ephemera that had once belonged to her longtime friend, Bill Hoyt. Bill lived most of his life in Newport and felt a strong sense of community and history, as he married, raised a daughter, and eventually lived out his life in Newport until his death in 2014.

The items Bunny dropped off, seemed of little value on the face of it -- several old ledgers documenting the paper route customers of the young Bill, ledgers from later years recording the income of 25 cents for one barrel of rubbish removal, 35 cents for two barrels. Besides being an economic record of the "history of trash disposal" the ledgers on second examination are a peek into who resided at a certain address in Newport at a given time.

As my eyes scanned the pages, stained with workman fingerprints, Cheney Street jumped out at me. That was the street I grew up on. Lamothe, my neighbor, Hackwell, again my neighbor, both of whom, by the evidence in this little book, lived there before I was born, and then long into my own childhood. Newport names, from the past and in the present, were familiar, both in the ledgers and the scrapbook, which Bill had compiled in 1956 and 1957.

(Continued on page 4)

Pharmacies in Newport by Larry Cote

"Wheeler's History of Newport, N.H. 1761-1878", states, "Drugs and Medicines were kept for a long time by merchants at their stores, mainly by Wilcox and Cheney..." We know that from the earliest days up until perhaps the 1960's, there were home remedies that may have been passed along from mother to daughter for centuries. The Newport Historical Society Museum has a handwritten Medical Recipe book from Doctor James Corbin dated 1790. In this book Dr. Corbin wrote the ingredients he used to treat the illnesses of the time. Home remedies likely still prevail in some families; but, for the most part, people today rely on drugs and medicines they purchase from a pharmacy.

When I came to Newport in the early 1950's, there were three Drug Stores: Sugar River Pharmacy, the Corner Pharmacy and John R. Kelly Drug Store. Let's see what we know about the origins of these drug stores. The 1961 Newport Bicentennial Booklet is the source of this history.

The John R. Kelly Drug Store was located in the center section of the Richards Block, now the home of Lake Sunapee Bank, about where the main entrance to the bank is located. As you entered the store, to your right were the newspapers, comic books and magazines. In the center of the store along the right hand wall was the soda fountain and at the back was the pharmacy. The Bicentennial Booklet



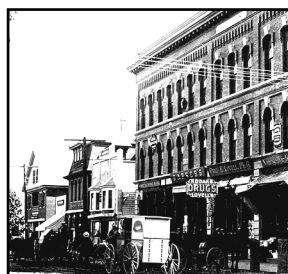
Cheney Block with Kelley Drug Store on far left.

states that, "this store has been serving the public since 1848, in the same place..." It tells us that they were in the old wooden Cheney Block until 1873 when the Richards Block was built. This is in contradiction to

Wheeler's History of

Newport, where it is written that Nathaniel Adams opened the first drug store in the Little's Block, that was located about where the center of the Newport District Courthouse now sits. Wheeler also states that before the first drug store, merchants such as Wilcox and Cheney kept drugs and medicines in their stores. The Wilcox and Cheney store was located in the old Cheney Block, so one could say that a drug store did exist from 1848.

When reading the histories of these three drug stores, one sees the same pharmacists' names. This could indicate that the druggist moved from one business to an-



Lovell's Drug Store

other; or, it could be confusion due to a lack of documentation. The Bicentennial Booklet states that in 1865 John C. Kelley, no relation to John R. Kelly, was the pharmacist. He kept a pet raccoon in the store and sold tickets for the Great Western Railway. In 1875 K. C. Converse took over, followed by F. E. Lovell about 1900, then John R. Kelly about 1929. After John R. Kelly's death, his daughter, Louise Kelly and son, Dick Kelly ran the store.

The Corner Pharmacy was sited in the Lewis Block on the corner of Main Street and Sunapee Street, where Petal Patch is located. A pharmacy was located



H.A. Willey's corner Drug Store



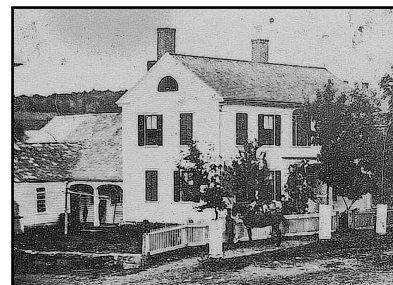
Corner Pharmacy, 1961

in that building since its construction in 1886. The chain of pharmacists was Lewis, Willey, Donovan Brothers and Ed Maley. R. A. Eggleston purchased it in 1943. After 85 years of operation at this location, the Corner Pharmacy merged with Kelly's on May 1, 1971. Don Eggleston went

to work at Kelly's as a pharmacist.

The Sugar River Pharmacy has an interesting history that is both documented in Wheeler and in the Bicentennial Booklet. Per Wheeler, Newport's first pharmacist was Nathaniel Adams in 1848. He opened his drug store in the old Little Hat Factory, which as I have previously said was about where the center section of the Newport District Court now is.

Carlton Hurd bought the drug store, circa 1870 and moved



The Little Hat Factory

(Continued on Page 4)

Health tips from "The Good Housekeeper" 1841

By Sarah Josepha Hale

"When a Nail or Pin has been run Into the Foot, instantly bind on a rind of salt pork; if the foot swell, bathe it in a strong decoction of worm-wood, then bind on another rind of pork, and keep quiet till the wound is well. The lockjaw is often caused by such wounds, if neglected."

Fortunately, today, we have better ways of warding off "the lockjaw." Keep your tetanus shot current! Keep your salt pork for seasoning baked beans!

MUSEUM COMMITTEE REPORT

By Larry Cote

2015 has been a very successful and satisfying year for the Newport Historical Society Museum! In 2015 we had 67 individual donations totaling 1,460 items. All items are gratefully accepted and will build an inventory for present and future displays.

Our collective accomplishments in 2015 were:

- 1) 23 new windows have been installed throughout the building.
- 2) The dirt around the building has been removed and replaced with landscaping fabric and stone with a wooden border to keep moisture and insects away from the building.
- 3) The third floor bathroom has been removed and replaced with a storage area for items that need to be climate controlled.

The displays have been changed or refreshed as of the end of September. Come in to see them for yourself.

Winter Carnival Display

We have one Princess Crown, three Queen Crowns and one Queen's Trophy in this display among other memorabilia. If you have Winter Carnival items to donate or loan, please call 863-1294, or bring them in on Sundays from 10 AM until 2 PM. We will be happy to revise the display to include your items.

Thank you to all of our membership. You all play a part in making the Museum a success. A special thank you to all the Executive Committee members and the Board of Directors who, week after week, volunteer their Sundays to keep the Museum open for your visitation.



PS: We would very much like someone to donate or loan an old candle-stick phone for our technology display.

FROM THE TREASURER'S DESK

By Jackie Cote

The year 2015 was an excellent one for the Society and Museum, with several projects completed. We replaced all 23 windows. The 3rd floor conference/research room bathroom was dismantled and converted to additional storage for climate sensitive items. Dirt & grass next to the foundation on the south side of the museum building were removed and replaced with stone, in an effort to avoid infestation by wood-eating insects. Thank you for your financial support which made these projects possible.

Purchases of our Newport books, ornaments, note cards and other memorabilia have been strong this past season. Our presence at Newport's Farmers Market during the summer and Sugar River Bank foyer during November and December, in addition to other venues, have given residents and visitors an opportunity to shop at our booth, along with our permanent gift shop at the Museum. The profit from the sale of these items funds the annual operating expenses of the Museum Building.

Our three new ornaments for 2016 are "**Winter**

Carnival Queen", currently available for sale, plus 1951 snow sculpture of "**King Carnival**", available mid-January, and "**Dog Sled Races**", available late January. The price, boxed and bubble-wrapped, remains at \$12.00 each.



These 3 scenes will also be available as notecards. We have added a 2016 100th Anniversary Winter Carnival logo sticker to the reverse side of the 250th bells to commemorate another of Newport's milestones. A limited quantity of stickers are also available for sale for those who had previously purchased a bell and would like to add this sticker to their bell's other side. In 2015, we added a set of 12 vintage Newport covered bridge post cards. Coming in 2016 will be colored post cards of various current Newport scenes.



Membership renewals remain strong, with 194 members as of this January newsletter. Since newsletters are only mailed to members, this could be your last mailed newsletter if your membership is not renewed by April 1. Your NHS Board of Directors wishes all of our members and friends a Happy, Healthy 2016!

Pharmacies in Newport (Continued from Page 2) by Larry Cote

it to the block located beside the river across from the Eagle Block, now the location of Alden's of Sunapee.

In 1907 Frank E. Bronson became a partner until Hurd's death, then operated it until his death in 1946.

Richard P. Donovan purchased it and operated it until his death when Bernard P. Towne purchased the business in 1955.

Today all three of these drug stores have closed and several new pharmacies have serviced Newport from different



Bronson's Drug Store

locations. Scarlett Drug Store, since closed, is the first that comes to mind followed by Rite-Aid, Sugar River Pharmacy and Z Pharmacy. In a small town with an aging population, we are fortunate to have three pharmacies. Pharmacies as we know them dispense drugs that are manufactured by large pharmaceutical companies all over the world. Our modern pharmacies are a far cry from the time of the early drug stores where a pharmacist would measure out portions of different materials, grind them together with a mortar and pestle, or perhaps sell our ancient relatives what we now call "Snake Oil" where the label on the bottle claimed to cure most any ailment you might have had. I think I will stick with the pharmacist of today!

Ephemera Donation an Example of Helping Museum Grow (Continued from page 1) by Ann St. Martin Stout

Roberta Woodhull became engaged and married. We know her as Bobbi Violette. Mr. and Mrs. Bernard Towne entertained their Sugar River Pharmacy employees at a Christmas party in their home. Orimer Bugbee was named Citizen of the Year. Judi Taimi was crowned 1956 Winter Carnival Queen. All these clippings, which were of importance to Mr. Hoyt, remind us that each scrapbook in the museum collection of approximately thirty, contains a different selection of articles and items, based on the original owner's interests.

It is through donations such as these that the Historical

Society has amassed a collection of Newport, NH documents, artifacts, and records. Please keep the Newport Historical Society in mind when helping a Newport relative clean out the basement or attic. All items are considered, including Newport advertising, posters and programs from plays, graduations, past winter carnival and other events. Yearbooks are also accepted and available for looking through when you visit the museum. Future generations seeking their heritage will thank you for donations which help keep the past alive.

The *Mill Town Messenger* is published quarterly by the Newport Historical Society
P.O. Box 413, Newport, NH 03773,

Website www.newportnhhistory.org Email newporths1761@gmail.com Facebook [NewportHS1761](https://www.facebook.com/NewportHS1761)

Museum phone number 603-863-1294

Call the Museum number above for appointments to tour the Museum at alternative times

Contributors to this issue: Cathryn Baird, Jackie Cote, Larry Cote, Ann St. Martin Stout

Newport Historical Society Membership Form:

Date: _____ New Membership _____ Renewal _____

Name(s) _____

Address/City/State/Zip _____

Email _____ Telephone _____

Personal Membership Type: ____ Individual (\$15) ____ Family (\$25) ____ Junior (\$1)

Corporate/Business: ____ Bronze(\$25) ____ Silver (\$50) ____ Gold (\$75) ____ Platinum(\$100) ____ Diamond(\$100+)

Here's my additional donation to the: Museum \$ _____ Operating \$ _____ Building \$ _____

Payment Method: ____ Cash ____ Check (Newport Historical Society) Total Enclosed \$ _____

Please mail to:

Newport Historical Society, PO Box 413, Newport, NH 03773