

# NEWPORT HISTORICAL SOCIETY

## MILL TOWN MESSENGER

Volume 13, Issue 1

January / February, 2019

### *From the President's Pen*



by Cathryn  
Baird...

**"One man's trash is another man's treasure."**

~Anonymous

### **"Odds and Ends"** ~plural noun: miscellaneous items or articles

According to *The American Heritage Dictionary of Idioms*, the expression "odds and ends" may have originated in the 1500's as "odd ends" meaning short leftover material such as cloth or lumber. While the exact origin has been lost to time, the present use of "odds and ends" is also synonymous with the words assortment, hodgepodge, jumble, junk, leftovers, litter, mishmash, potpourri, refuse, remnants and stuff to name a few. Our lives are riddled with odds and ends that can be morphed into a treasure trove of artifacts and ephemera by historians and hard working members of local historical societies!

Knowledge of Newport's past has come from discarded and often forgotten remnants that collectively shed light on the heritage of our town. So whenever you are de-cluttering or downsizing and want to unload some "odds and ends" consider donating your "stuff" to the Newport Historical Society so that another exhibit can be created.

We are very grateful to Barbara Huff for her numerous recent donations of "Odds and Ends" which are currently on exhibit at the museum. Come visit YOUR museum - it's informative and warm!

### **Meeting & Program Times**

*All members and the public are  
invited to all meetings and any of  
these free programs*

**BUSINESS MEETINGS:**  
**6:30-8 PM,**

**NHS museum,**

Mon., February 11

Mon., March 11

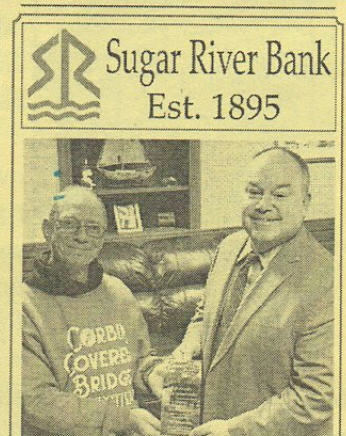
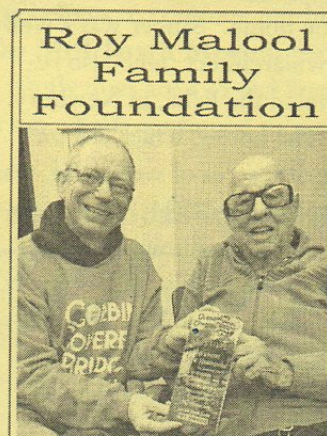
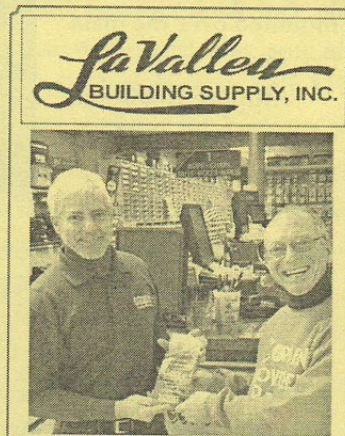
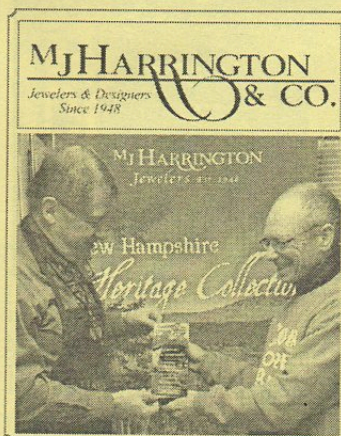
Mon., April 8

### **PROGRAMS:**

#### **April Program:**

Ken Vigue presents "**Governor  
Murphy, A Life**" at the Rich-  
ards Free Library. This is a rem-  
arkably well-documented story  
of Newport's only governor,  
Frances Parnell Murphy. Date  
and time to be announced.

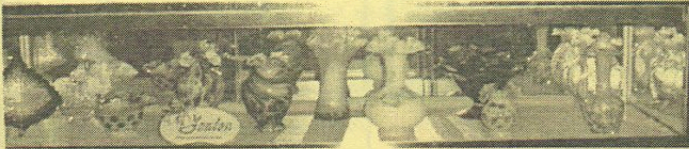
**NHS SINCERELY THANKS THESE MAJOR DONORS  
TO THE CORBIN COVERED BRIDGE FESTIVAL**  
Coming to Newport Columbus Day Weekend, Oct 12, 2019





## BARBARA JEAN (GOSSLIN) HUFF BY LARRY COTE

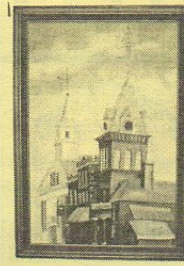
One of our featured displays this year, at the Newport Historical Society Museum, is the "Paintings and Collections of Barbara Huff". Barbara has donated her art work and that of other artists, her extensive collection of collector glass, and a beautiful curved glass curio cabinet to display her items in.



The Gosselin family's home was at 167 North Main Street. Barbara graduated from Towle High School in 1953 and married Carlin Huff in 1960. Together they operated **Dot's Pastry Shop** on Depot Street. If you lived in Newport in the 1950's & 60's, who could forget Dot's Pastry Shop! The baked beans, "lemon bow ties" and many other items were to die for! They later moved the bakery shop to 63 Main Street and eventually purchased the building.



Barbara is mostly a self-taught artist, having taken some lessons at Lebanon College, and additional lessons from the artist, Oscar Durant. Many of



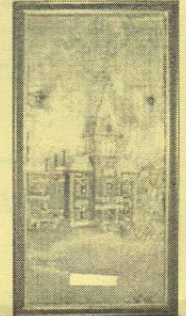
Corbin Covered Bridge.

In addition to Barbara's accomplishments as a painter, she owned and operated a ceramic shop for 15 years where she taught the art of ceramics. Barbara also



Barbara's paintings depicted local buildings in Newport and the surrounding towns.

When the town replaced the slate on the Opera House tower many years ago, Barbara used the old slate to paint 25 paintings of the Opera House and 10 paintings of the



owned and operated **Barbie Jean's Apparel Shop** at 57 Main Street. She now owns and operates the **Odds and Ends Shop** where you can find some of Barbara's original paintings as well as affordable prints of her work. Barbara also keeps a good supply of antiques and unusual items.

Over the years Barbara has been a generous supporter of the Newport Historical Society Museum, donating many of her paintings and art collections. Come in and see Barbara's work.

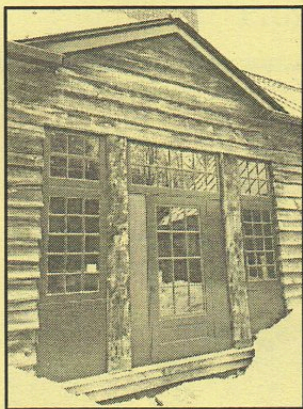
## WHERE ARE WE GOING? "FAR AWAY" by Priscilla Hagebusch

An interesting family home in the north Newport area, affectionately named, "Far Away," (for the daylong car trip to get there on 1940's roads) has recently passed to new owners. Prentice and Annette Colgate Sanger designed and

built the home, utilizing the numerous trees fallen in the 1938 Hurricane, as a summer and vacation home. Sanger was a well-known architect, who also re-modeled the Fells, in Newbury.

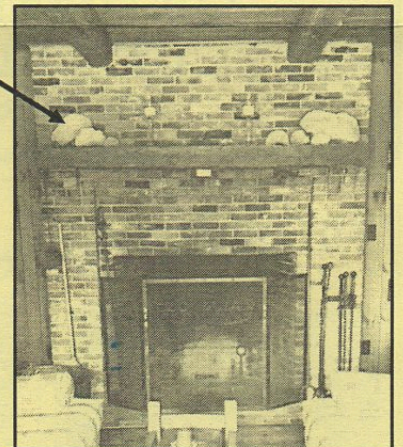
The house, which sits on over 300 acres of woodland, was completed by 1941. Annette's son, Attmore Robinson, Jr., brought his family to "Far Away" for summers and holidays. He was married to Anais Kalten-

born, daughter of H.V. Kaltenborn, a well-known radio newscaster of the 30's and 40's. Kaltenborn, called the



"Dean of Commentators", was a "documented" frequent visitor to "Far Away." Guests names were recorded in the many guest books at the home, and inscribed on the fungal concretions, (tree-growing polypore mushrooms) collected and mounted over the main fireplace.

Attmore Robinson, a Long Island realtor, was also a partner in Newport's Sugar River Fabrics, a hand-woven woolen mill on Oak Street, beside the green metal bridge. This mill was located in the former Sibley Scythe factory, and operated from 1948 to 1965. "Far Away" has been owned since 2004 by Erica Jackson, Robinson's daughter and California resident.



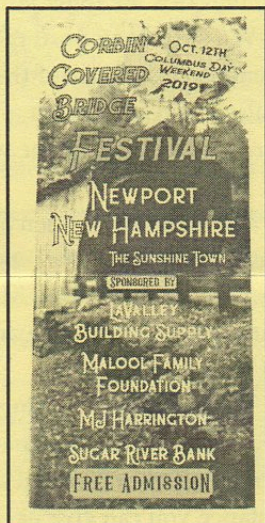
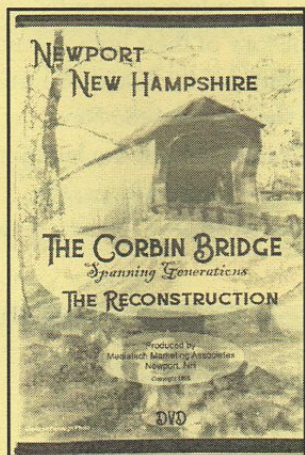


## THE TREASURER'S DESK by Jackie Cote

Thanks to everyone who shopped with us at the Museum and our other venues during 2018. Profits from these item's sales fund the Museum's operating budget.

The Corbin Covered Bridge (CCB) Festival Committee has been diligently working on the big day's events. The beautiful color brochure has arrived. Initially, the brochure will be available on I-93 at the north and south Hooksett rest areas and I-89 at the 3 rest areas from Concord to Lebanon.

A recent addition to our Corbin Covered Bridge items for sale is the DVD remaster of the original VHS tape "**Corbin Bridge – Spanning Generations – The Reconstruction**".



The original was produced by Dick Creterola, who recently granted us permission to reproduce it as a DVD.

"**Spanning Generations**" completely documents the reconstruction process from the fire in May 1993 to the dedica-

tion in January of 1995. Technical support on the remastering was provided by NCTV-Newport.

There are many activities planned for this CCB Festival, October 12, 2019. They include, but are not limited to:

- \* Heritage Parade through the bridge
- \* Dinner IN the bridge
- \* Food vendors
- \* Music through out the day
- \* Authentic Concord Coach
- \* Antique Cider Pressing
- \* Antique vehicles
- \* Covered bridge builders and bridge building tools
- \* Dousing exhibitions
- \* 1870's Letterpress demonstration
- \* Wool spinning demonstration
- \* Unique craft vendors, weaving and other Fiber Arts
- \* Tommy & Friends children's train
- \* Magician
- \* "Woodsmen" events
- \* Antique tools & demonstrations
- \* Bus trip (for those interested), to the Pier & Wrights Railroad Covered Bridges narrated by Dr James Garvin, Retired NH State Historian,
- \* Arnold & Meg Graton (Arnold & company rebuilt the current bridge in 1994), on and on!

Thanks to our friends at Newport's Parlin Field, we have been granted use of their entire turf runway, from the bridge to its end, for the day. The event will run from 9:00 AM to 3:00 PM when preparations for dinner in the bridge will begin. Please **SAVE THE DATE – October 12, 2019.**

### Membership Drive Notes:

If you are a new member or have renewed your membership, **many thanks** for your support. If you recently received our Reminder Letter (big pink heart on the front), please help us to continue our historical work by renewing your membership. If you do not renew by April, this issue of the **Mill Town Messenger** will be the last that you will receive in the mail. Annual individual dues are only \$15, family dues are \$25 and business/corporate dues begin at \$25, and Life Memberships are available for \$250 per person. Your continued support is vital to our success. Thanks in advance for renewing!

**Your support keeps the Newport Historical Society ALIVE!**

**NHS Board Members:** Cathryn Baird, Pres.; Jerry Hagebusch, V. Pres.; Larry Cote, Museum Director; Jackie Cote, Treas.; Dean Stetson, Secretary; Priscilla Hagebusch, Arnie Hebert, Jayna Huot, Rita James, Laura McCrillis Kessler, Annette Menard, Tobin Menard, Stan Sweeney, Arthur Walsh.



## THE MUSEUM REPORT by Larry Cote

The year 2018 was very good for the Newport Historical Society Museum. We had 258 visitors sign the Museum's register. We know that many do not sign the register, so we feel that visitation is strong.

We had 93 donations of artifacts, totaling 1,166 items during the year. It takes a large inventory of items to change the displays each year and not duplicate a display within a five year span. We very much appreciate all donated items. Whether a single item or a hundred items, they all help to tell the story of Newport's past.

The displays were changed in September for the coming year. The bedroom features many paintings by Edna Eggleston. We have an extensive display of items donated by Barbara Huff, several of her oil paintings, a curio cabinet and a large quantity of her collection of glass and ceramics. (See her story in this issue.)

We have a split display of police-related items in honor of the 150<sup>th</sup> anniversary of the Police in Newport (photos of some of the police items were in the last issue of this newsletter.) The other half of the display features Newporter, Kenneth Andler. Ken Andler was a Surveyor, Lawyer, Writer and Artist. We have some of his surveying tools and photos of the survey teams, as well as some Andler paintings on display.

The kitchen has a new display of aluminum cookware from the 1930/40's. Not long before these pots were made, aluminum was sort of rare. Also in the kitchen is a new table setting and a hot chocolate set on top of the ice box. Both halls have new displays of framed photographs of Newport buildings that we think you will find interesting.

We have been posting historical Newport photos in the ground floor hallway of the Town Office. We change them regularly and label them. Take a look when you register your car, pay your tax or water bill. It will make it more fun!

The Museum is open Sundays from 10 am until 2 pm except for holiday weekends, or by calling 863-1294 for an appointment to visit the Museum at a more convenient time to fit your schedule. We are heated and air conditioned so visit us anytime.

We are always looking for photos of the businesses that were located along Sunapee Street. People moving into town are often interested in the history of their home. Any assistance you can give us, old pictures of the house or history of past owners, will help. See the story on the Newport Home "Far Away" in this issue. We are also on the lookout for photographs of the two railroad covered bridges, the Cole and Comstock, in the Paradise Road area. Have a great 2019.

The *Mill Town Messenger* is published quarterly by  
the Newport Historical Society  
P.O. Box 413, Newport, NH 03773,  
Museum phone number 603-863-1294  
Call the Museum number above for appointments to tour  
the Museum at alternative times.

Website [www.newportnhhistory.org](http://www.newportnhhistory.org)

Email [newporths1761@gmail.com](mailto:newporths1761@gmail.com)

Facebook [NewportHS1761](https://www.facebook.com/NewportHS1761)

### Newport Historical Society Membership Form:

Date: \_\_\_\_\_ New Membership \_\_\_\_\_ Renewal \_\_\_\_\_

Name(s) \_\_\_\_\_

Address/City/State/Zip \_\_\_\_\_

Email \_\_\_\_\_ Telephone \_\_\_\_\_

Personal Membership Type: \_\_\_\_\_ Individual (\$15) \_\_\_\_\_ Family (\$25) \_\_\_\_\_ Junior (\$1)

Corporate/Business: \_\_\_\_\_ Bronze(\$25) \_\_\_\_\_ Silver (\$50) \_\_\_\_\_ Gold (\$75) \_\_\_\_\_ Platinum(\$100) \_\_\_\_\_ Diamond(\$100+)

Here's my additional donation to the: Museum \$ \_\_\_\_\_ Operating \$ \_\_\_\_\_ Buildings \$ \_\_\_\_\_

Life Membership (\$250 - each person) \_\_\_\_\_ (Never have to renew again!)

Payment Method: \_\_\_\_\_ Cash \_\_\_\_\_ Check (Newport Historical Society) Total Enclosed \$ \_\_\_\_\_

Please mail to:

**Newport Historical Society, PO Box 413, Newport, NH 03773**