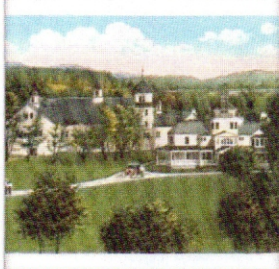


NEWPORT, NEW HAMPSHIRE, is the birthplace of **Sarah Josepha Hale**, America's "Mother of Thanksgiving" – her home and inspiration for the first 40 years of her life. Its hills and trees provided the place of retreat for the 19th-century banker, railroad magnate, Coney Island developer, and game preserve founder, **Austin Corbin**. Its waterways fueled woolen and shoe factories that provided economic opportunities for thousands of Irish, Finnish, and Greek immigrants. Renowned 20th century vaudevillian, **Billy B. Van**, called it the "Sunshine Town," where "the sun shines on both sides of the street at the same time." (Van wasn't dubbed Newport's "Honorary Mayor" for nothing!)

While promotion may be the art of the entertainer, the Newport Historical Society similarly delights in its commitment to accentuating the rich and dynamic history of its community. Visitors to the NHS museum, located in the historic **Nettleton House**, will enjoy an array of interactive exhibits – including original oil paintings by **André Chéronnet-Champollion**, the great-grandson of famed Egyptologist and Rosetta Stone decipherer, Jean-Francois Champollion. If you thought Newport was cloistered and provincial... think again! There's more than meets the eye...and the **NHS Annex archival collection** (located in the town's historic **1827 courthouse gallery**), boasting thousands of historical objects and written materials – local and national in scope – can prove it!

Join us in the adventure of re-discovery.
Newport and its history: a microcosm of America.



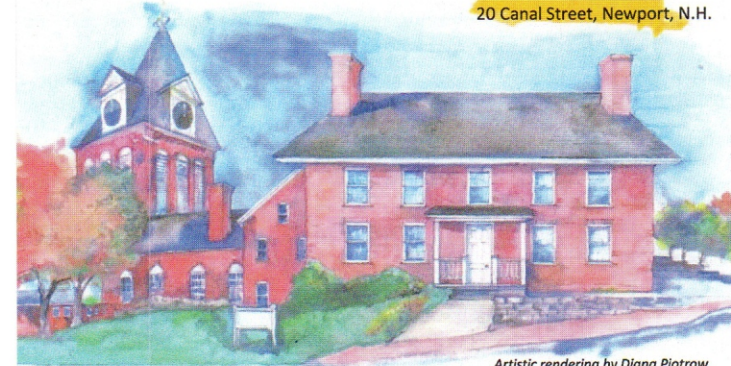
Newport Historical Society Museum, 20 Central Street, Newport, N.H.

Open Sundays 10 a.m. – 2 p.m., or by appointment.

www.newportnhhistory.org • 603.863.1294 • newporths1761@gmail.com

The **Newport Historical Society** and **Museum** at the historic **Nettleton House**

20 Canal Street, Newport, N.H.



Artistic rendering by Diana Piotrow

Did You Know? Newport, N.H., is...

- The birthplace of Sarah Josepha Hale, America's "Mother of Thanksgiving."
- Connected to the famous Egyptologist and Rosetta Stone decipherer, Jean Francois Champollion.
- The home of thousands of 19th and 20th century Irish, Finnish, Polish, and Greek immigrants and their families, who contributed to thriving woolen and shoe industries.
- Partners with local business firms world-renowned for precision manufacturing and chemical coating capabilities.
- The home of 2 of only 8 existing railroad covered bridges in the U.S.
- Alive with community spirit 250 years strong!

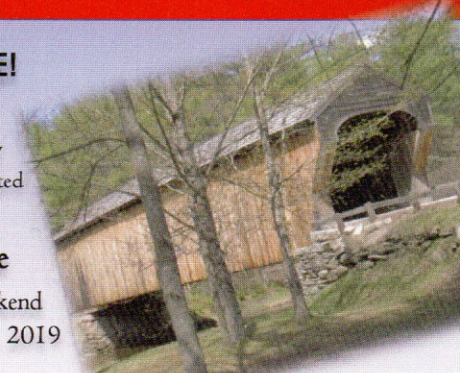
Come and Discover... Newport's rich heritage!

SAVE THE DATE!

Join us to *celebrate*
 the 25th Anniversary
 of Newport's reconstructed

**Corbin
 Covered Bridge**

Columbus Day Weekend
 October 12th and 13th, 2019



Introduction

The first Newport Historical Society was established in 1928. Later a new Society was incorporated on February 26, 1975 by the State of New Hampshire. Our mission includes collecting, preserving, and fostering public interest in Newport history.

The Newport Historical Society is a non-profit organization. It is funded by private and corporate donations, fundraising events and membership dues. Meetings are held at 7pm on the second Monday of every month at the Sugar River Savings Bank Community Room.

The Society's Museum, housed on the second floor of the old District Court Building at Courthouse Square, sits on the knoll behind the Opera House. The Museum houses a large number of artifacts which have been collected over many years. It is accessible by entering the municipal parking lot off of Central Street. The Museum is open during the summer several days a week, and by appointment during the winter. Museum exhibits change every few months, so return again and again to learn more about the history of the Newport area.



The Newport Historical Society would like to increase its membership, and hopes that anyone with an interest in Newport will join us and help support the preservation of our local history. For further information, to make an appointment, or to leave a message please call 603-863-1294.

Learn about our...

People



NHS Archives

Newport High School Class of 1896

Places



Kenison Photo, NHS Archives

The Common, 1964

Lives



NHS Archives

Peerless Manufacturing Co, ca. 1910

NEWPORT HISTORICAL SOCIETY ~ MEMBERSHIP APPLICATION / RENEWAL

New Member _____ Renewal _____

Date: _____

Name/s: _____

Address/City/State/Zip: _____

Email: _____

Telephone: _____

I would like to join as: _____ Individual (\$15.00)

_____ Family (\$25.00)

_____ Junior (\$1.00)

Corporate/Business: _____ Bronze (\$25) _____ Silver (\$50.00)

_____ Gold (\$75) _____ Platinum (\$100)

_____ Diamond (Over \$100)

Please use my additional donation of \$ _____ for the: _____ Museum Fund _____ Operating Expenses _____ Building Fund

Payment Method: _____ Cash

_____ Check (Newport Historical Society)

Total Enclosed \$ _____

Newport Historical Society

PO Box 413 Newport, NH 03773

Rcvd by _____